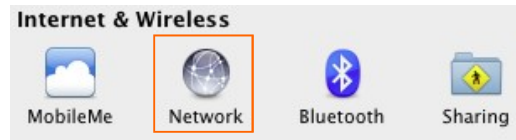
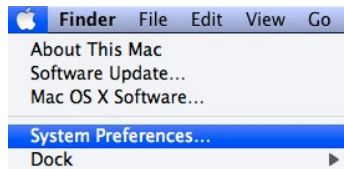
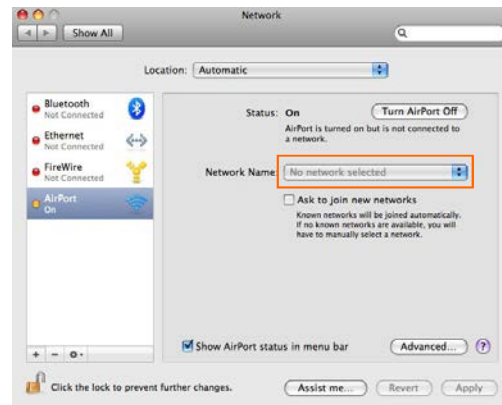
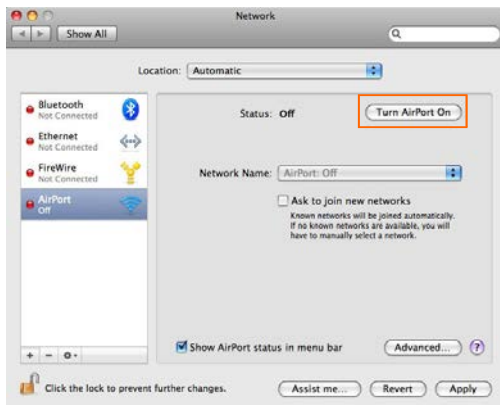


Wireless network guide for Apple Macintosh OS X (all versions)

Step 1: Open **System Preferences**. This can be found in the menu bar under the **Apple** icon. Under the **Internet & Wireless** section, select **Network**.



Step 2: Select **Airport** from the menu on the left, and click on the **Turn Airport On** button. Once Airport is on, click on the drop-down menu next to **Network Name** and select the **MDXUNI** network. You will then be prompted for a password.



Step 3: Please ensure you enter your PC network / Athens user ID (e.g. zz9999) and password details correctly. Make sure the **802.1X** is set to **Automatic**, and that the **Remember this network** box is ticked, and press **OK**.

You will then see the **Verify Certificate** message below; click on **Show Certificate** to check that the certificate originated from a valid and secure university server—either **whep-acsa01.uni.mdx.ac.uk** or **mdx-nwa-dc1.uni.mdx.ac.uk**. After verifying, click on the **Continue** button to confirm network connection.



Step 4: The Airport icon in the System Preferences menu will then indicate a successful connection to the **MDXUNI** network. You will now have access to the internet, as well as all university resources.

