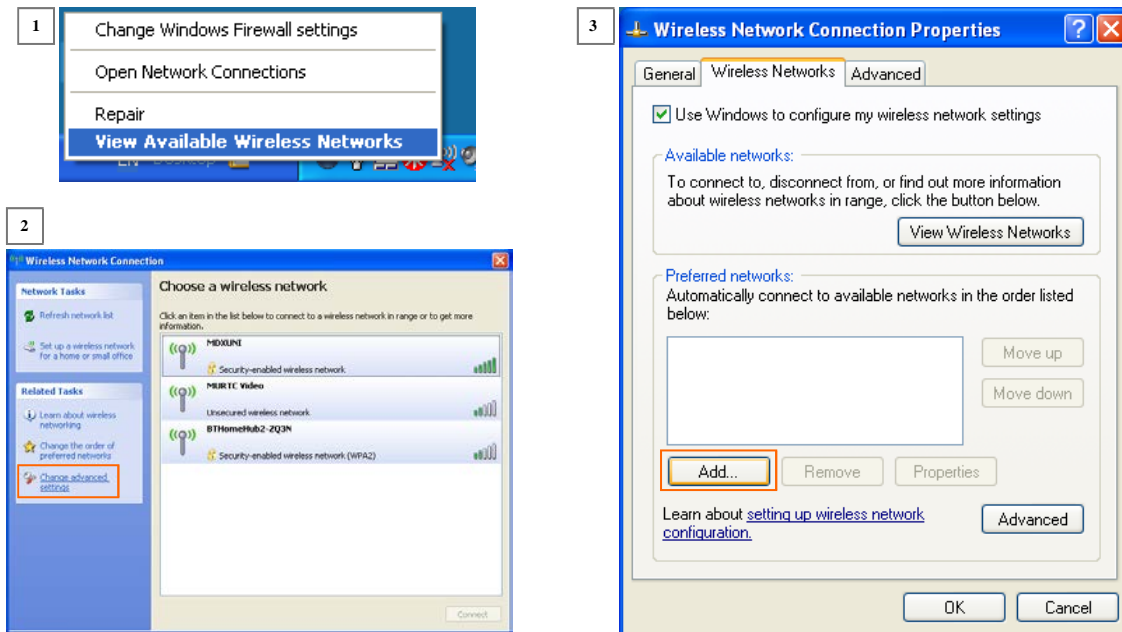


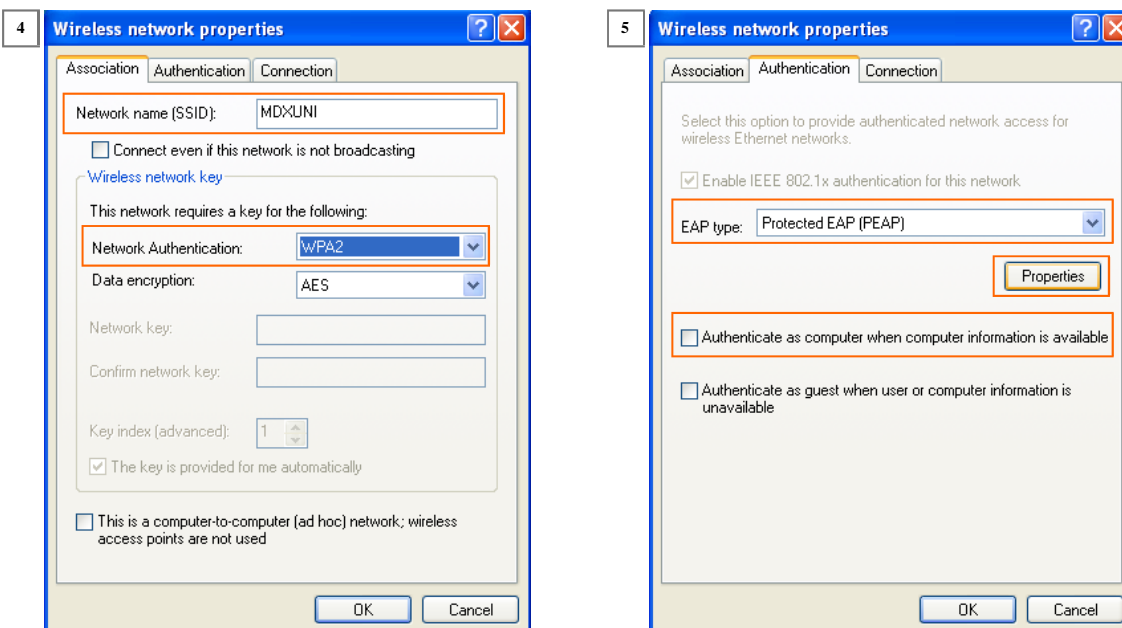
Wireless network guide for 32-bit Windows XP

On older laptops running Windows XP, you will not be able to connect to the wireless network automatically, so you will have to add the **MDXUNI** network manually. To do this, you will need to right-click on the wireless icon in the system tray, and select **View Available Wireless Networks** (1).

You will then need to click on **Change advanced settings**, on the left-hand side of the window (2).



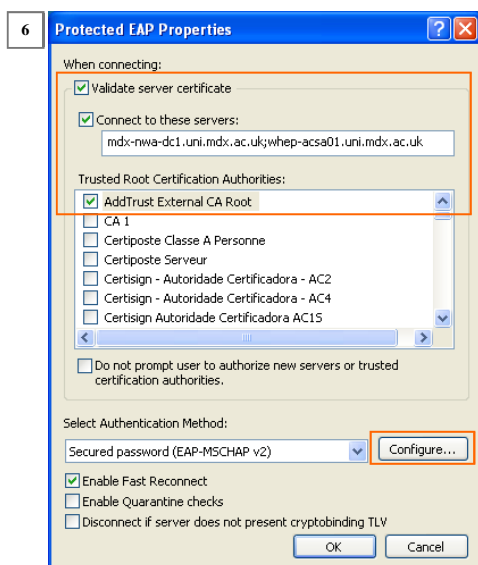
In the Wireless Network Connection Properties window that opens up, click on **Add** (3). In the following window type in **MDXUNI** for the **Network name (SSID)**, and select **WPA2** for the **Network Authentication** (4). Then click on the **Authentication** tab, and under **EAP type** select **Protected EAP (PEAP)**. Uncheck the “**Authenticate as computer when computer information is available**” box, and then click on the **Properties** button (5).



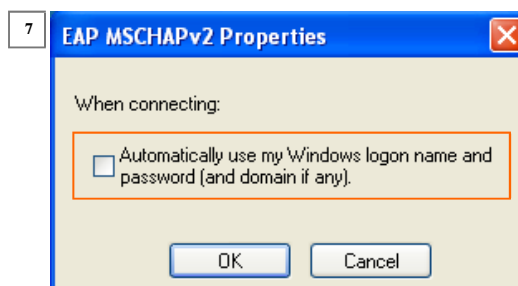
Please turn over

In the window that opens up, you will need to do the following (6):

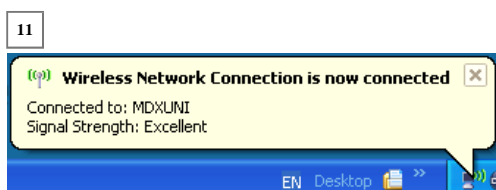
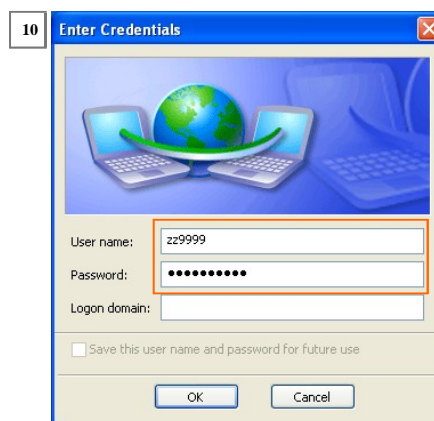
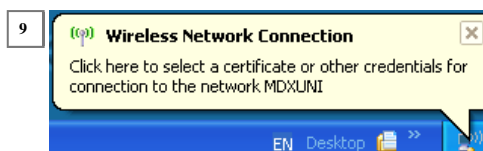
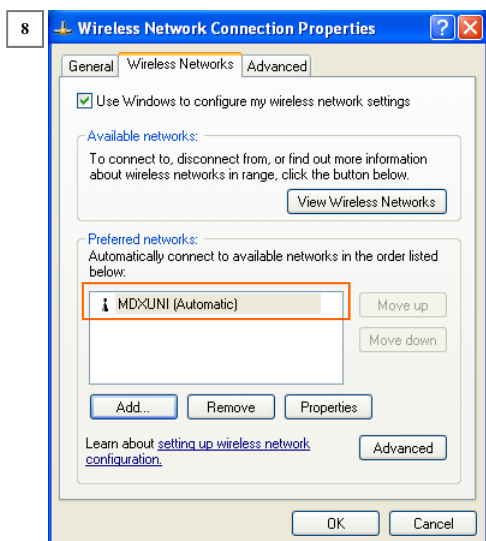
- Check the **Validate server certificate** box
- Check the **Connect to these servers** box, and then type in the following without any spaces:
mdx-nwa-dc1.uni.mdx.ac.uk;whp-acsa01.uni.mdx.ac.uk
- Under **Trusted Root Certification Authorities**, find **AddTrust External CA Root** and check the box.



Then, click on the **Configure...** button near the bottom. In the small **EAP MSCHAPv2 Properties** window that opens up, uncheck the box (7). Click on **OK** to close the window, and then click on **OK** for the **Protected EAP Properties** window.



In the **Wireless Network Connection Properties** window you will now see that **MDXUNI (Automatic)** will have been added to the list of preferred networks (8). Click on **OK**, and after a few seconds you will see the **Wireless Network Connection** speech bubble below (9); click on it to enter your authentication details.



A window will pop up, asking for your credentials (10). Enter your PC network login ID (e.g. zz9999) and password, and click on **OK**. After a few seconds you will see a speech bubble above the wireless icon in the system tray, confirming successful network connection (11).

Having problems with connection? Ask for help at the IT helpdesk
(Sheppard Library, Hendon campus)