

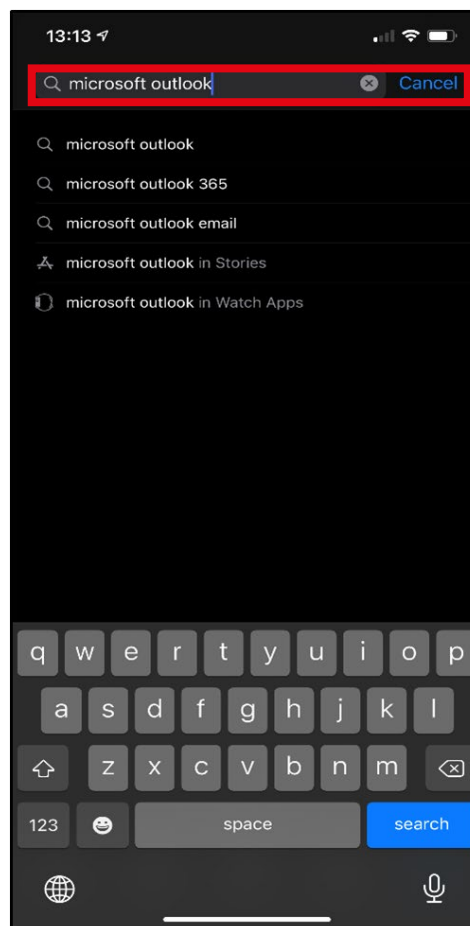
Microsoft Outlook - MDX Email set up guide on Apple devices

This guide will show you how to set up your Middlesex email through Microsoft Outlook on Apple devices.

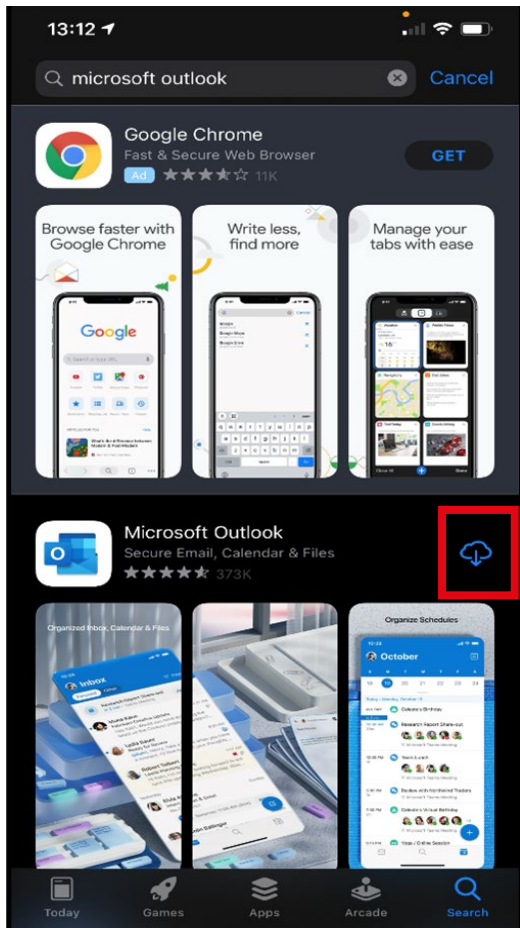
Please note this should be the only application used to access your University e-mails.



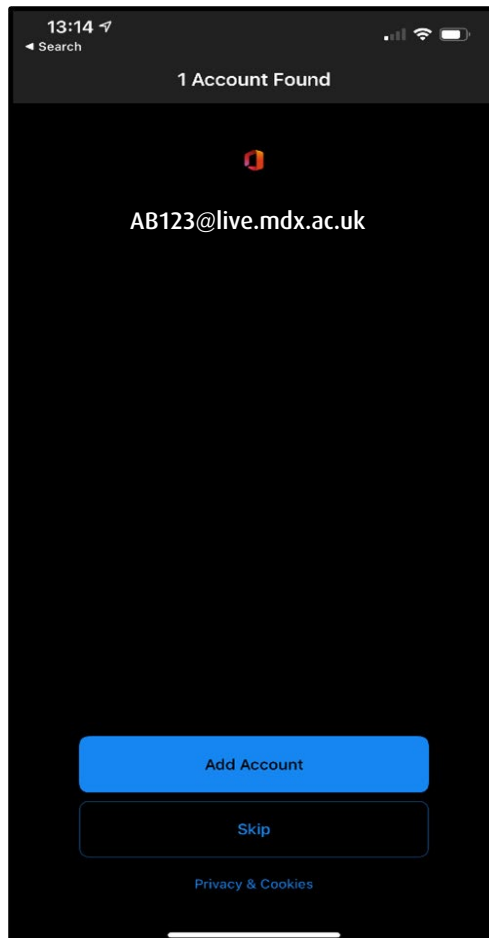
Step 1: Open the **App Store** App and look for the Search Bar



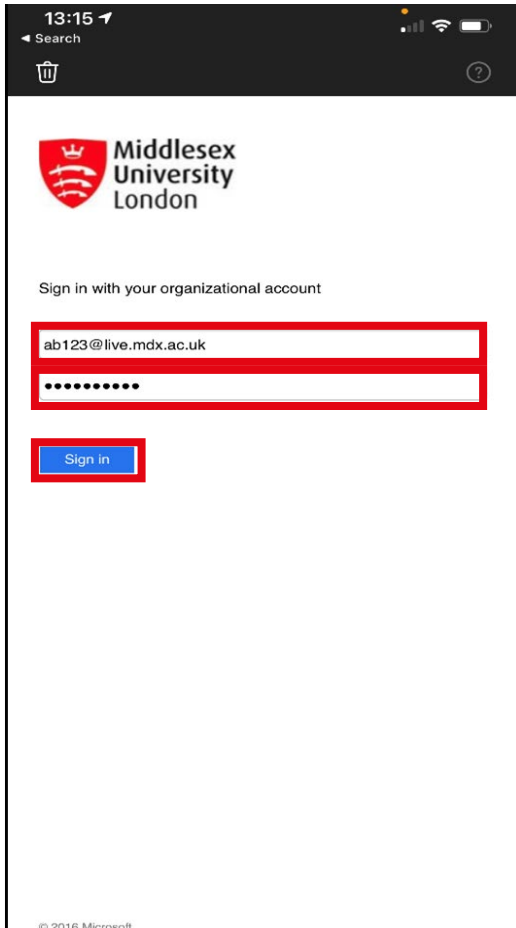
Step 2: Type Microsoft Outlook into the search bar



Step 3: Click on Get to download to your device



Step 4: Click on Add Account. Enter your Middlesex University email account e.g. AB123@live.mdx.ac.uk



Step 5: The organizational page will appear. Enter your Middlesex University email (e.g. **ab123@live.mdx.ac.uk**) and password to securely add your account to Microsoft Outlook. Click **Sign In** to finish.