



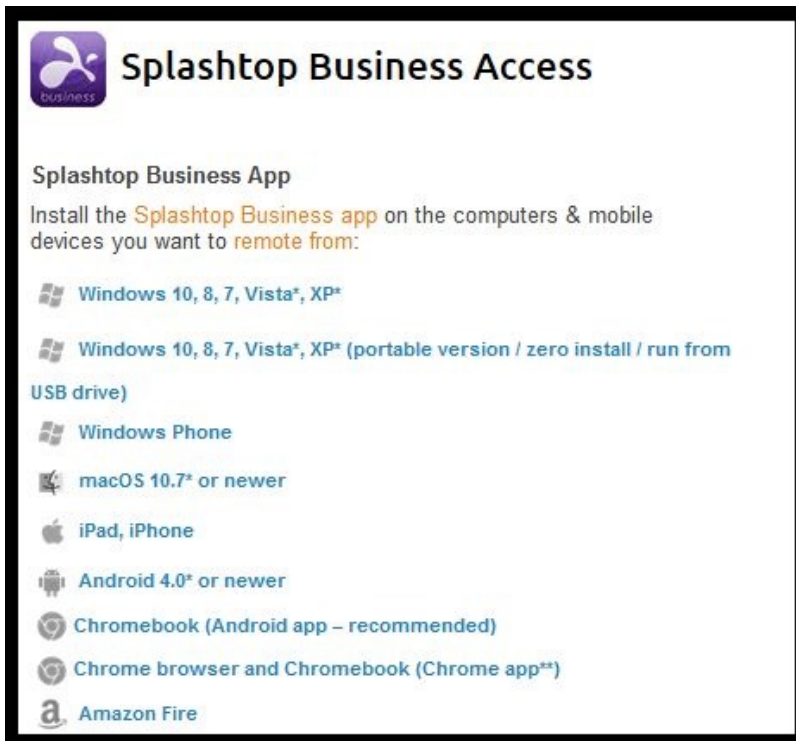
# Splashtop for Students

---

## Guide for Students

This guide covers software download, installation, account setup and general connection instructions.

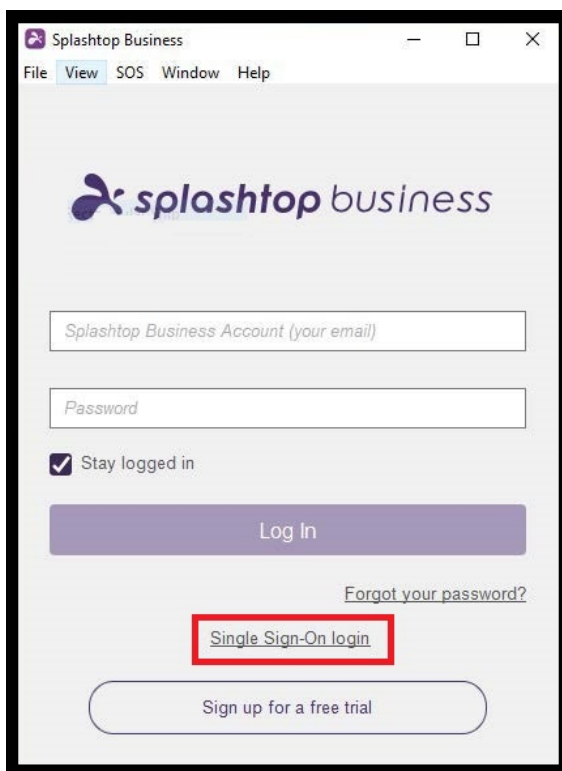
1. To download Splashtop onto your device go to: [www.splashtop.com/downloads](http://www.splashtop.com/downloads)
2. From the list of possible downloads, please select the one appropriate for your platform/system or device. Download and install the Business app.



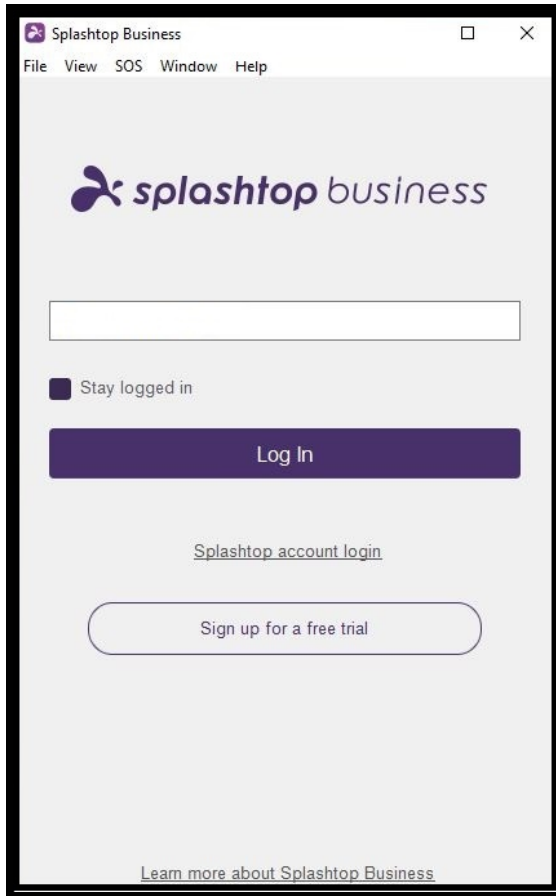
3. Once installed, Click on the Splashtop Business shortcut.



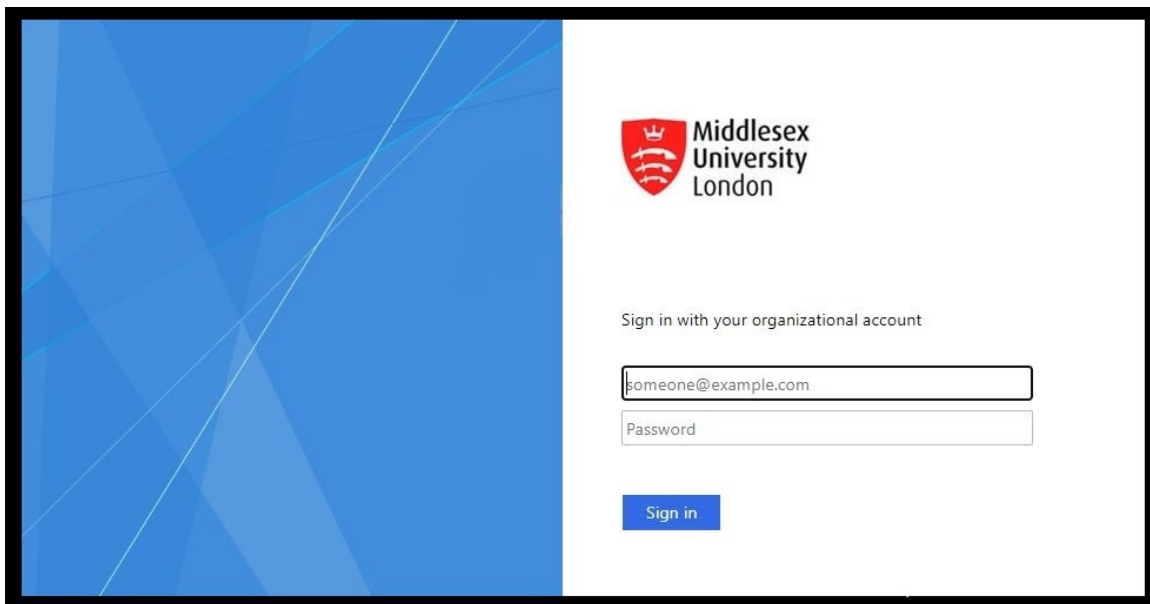
4. The Splashtop Business app will open, click on Single Sign-On login.



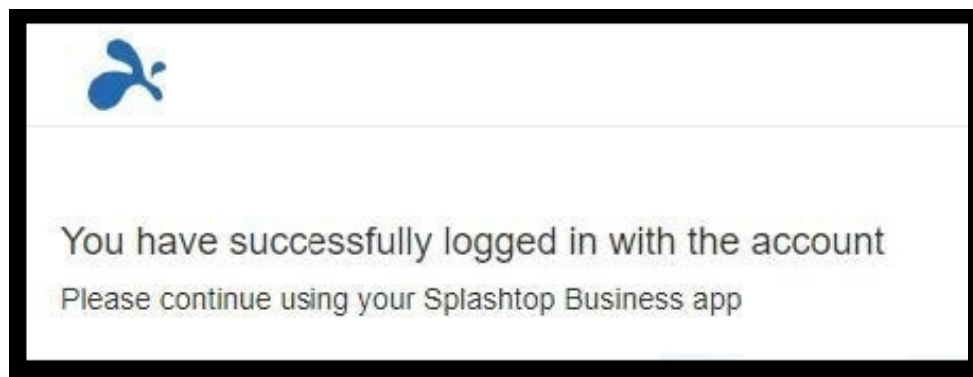
5. When the following screen appears enter your full university email address (e.g. ab1234@live.mdx.ac.uk), then click on **Log In**.

A screenshot of a web browser window titled "Splashtop Business". The window has a menu bar with "File", "View", "SOS", "Window", and "Help". The main content area features the "splashtop business" logo at the top. Below the logo is a text input field. Underneath the field is a checkbox labeled "Stay logged in". A prominent purple button labeled "Log In" is centered below the checkbox. Below the "Log In" button is a link that says "Splashtop account login". Further down is a rounded button labeled "Sign up for a free trial". At the very bottom of the page is a link that says "Learn more about Splashtop Business".

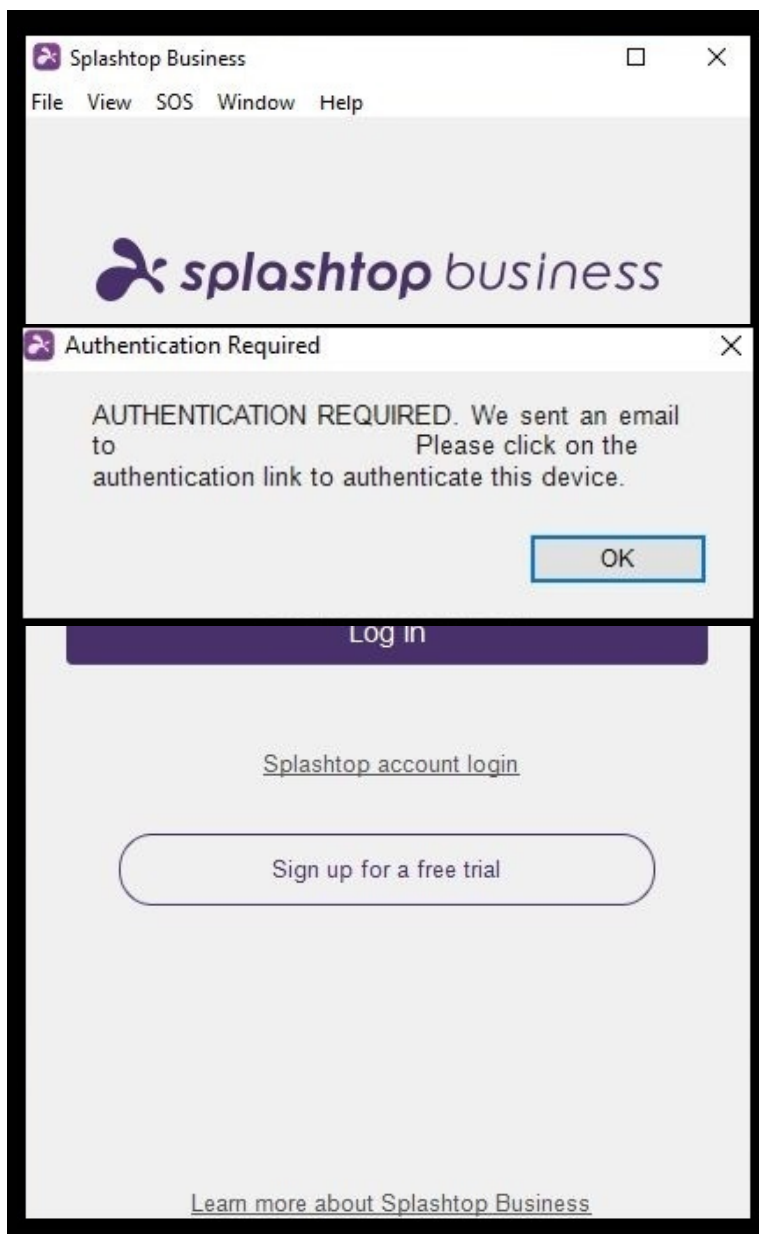
6. You will be prompted with the screen below, enter your full university email address and password. Then click on **Sign In**.

A screenshot of a login page for Middlesex University London. The left side of the page has a blue background with a geometric pattern. On the right, the Middlesex University London logo is displayed. Below the logo, the text "Sign in with your organizational account" is shown. There are two input fields: the first contains the placeholder text "someone@example.com" and the second is labeled "Password". A blue button labeled "Sign in" is positioned below the password field.

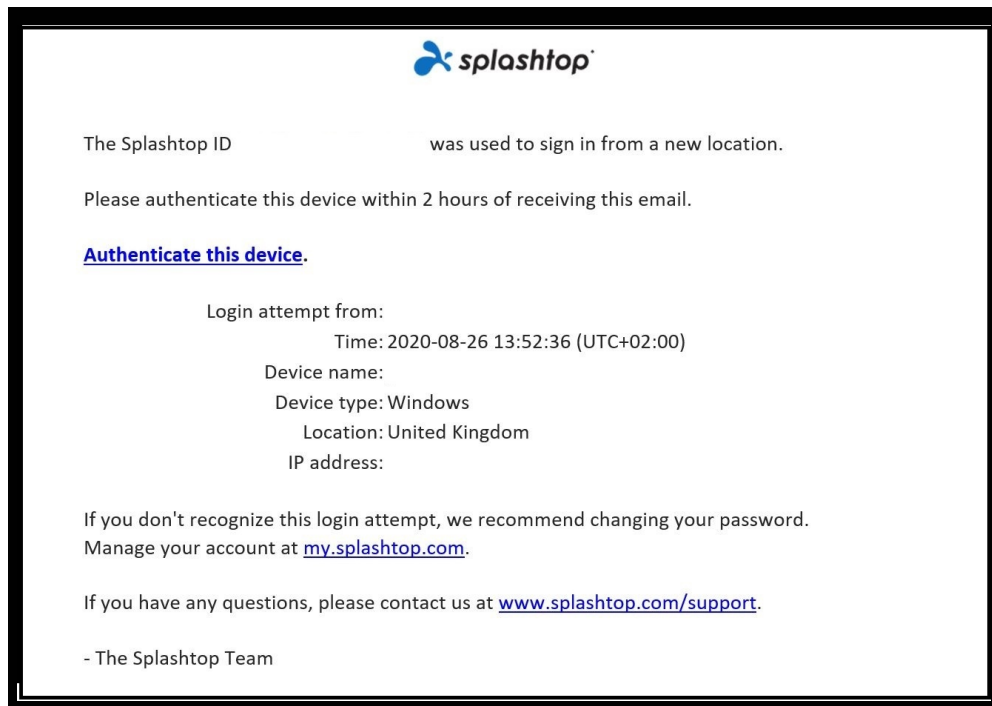
7. The confirmation screen below stating **You have successfully logged in with your account** will appear.



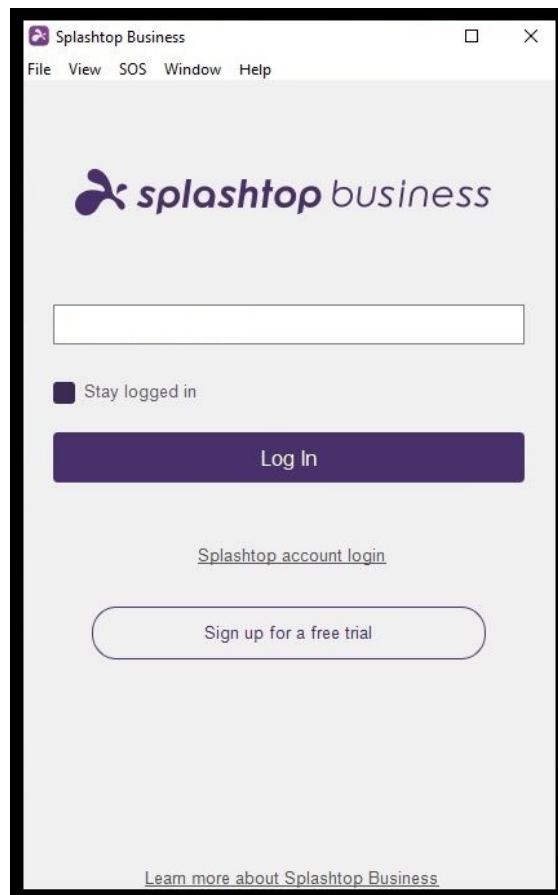
8. Go back to the Splashtop Business app, you should see a message to authenticate your device, **"AUTHENTICATION REQUIRED"**. This is to ensure the security of your account. **Press OK.**



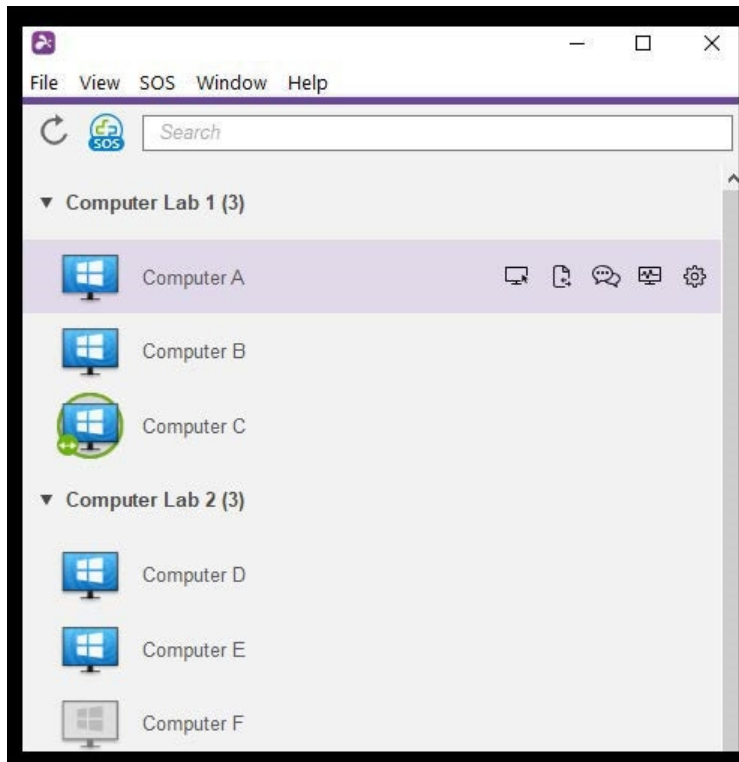
9. Go back to your Middlesex email account and you will see the email below. Click on **Authenticate this device**. You will see a notification stating "**The device has been successfully authenticated. Please go back to your Splashtop app to access your computers**".



10. Log back in to the Business app with your Middlesex email address and you will be able to launch a remote session from that device.



11. Once you have logged into the Business app, you will see a list of computers you have been granted access to. Computers are grouped into Labs or Areas. To see the list of computers available in each, click the arrow to the left to expand the list. Also, if an area is not available to you, you may not see any computers there.



Computer List Icon Indicators:



Online - the computer is available to start a remote session.



In session - the computer is currently in another remote session.



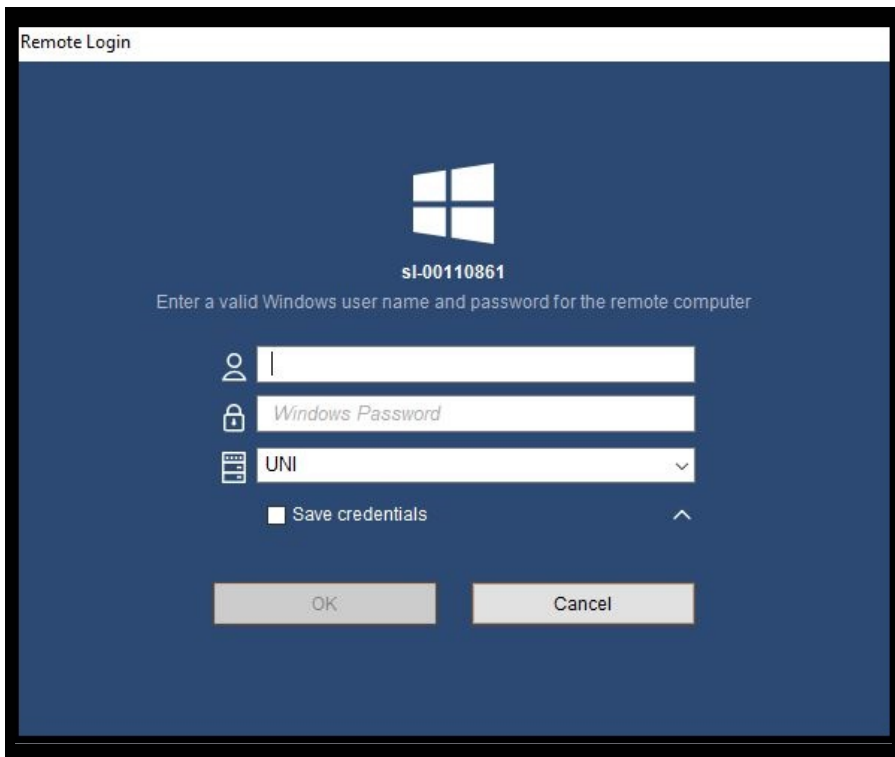
Offline – the computer is not accessible remotely.

Depending on what platform you're connecting from, double-click/tap on an available computer to connect.

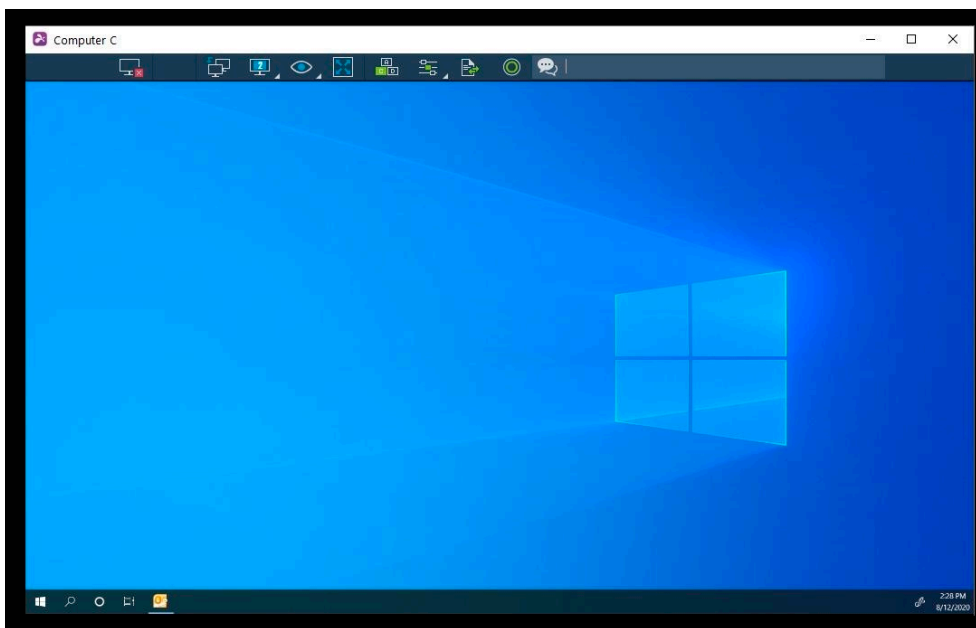
12. Once you're connected into a computer, you will be prompted to login with your MyUnihub Username and Password.

(For ACI computers, login with your DMW login details.)

(For Photo Network computers, login with your VN login details.)



13. You can now control and work as if you're sitting in front of the computer!



14. To end the remote session, it is **very important** that you log out of your user account on the remote computer. Then, disconnect the session by selecting the disconnect icon in the toolbar, or close the session window.

**Please note that when you connect into a remote session It Is recommended that for your security and privacy you exit any applications you have open that is displaying content such as personal or confidential information, because your display will be visible in the classroom to enable you to get help from your lecturer or academic.**

**If you require technical support please contact your school technician.**